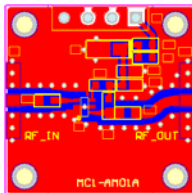


**RoHS Compliant & Pb Free Product**

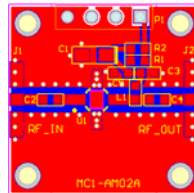
**MC1-AN005**

- Documents: Microwave Cell Application Note: PCB Cell Inventory

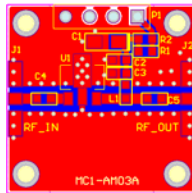
**Amplifier PCB Cells:**



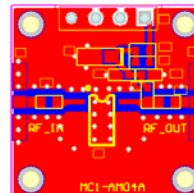
**MC1-AM01A**  
(SOT-363)



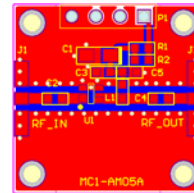
**MC1-AM02A**  
(SOT-86)



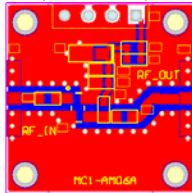
**MC1-AM03A**  
(SOT-89)



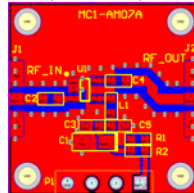
**MC1-AM04A**  
(SOIC-8)



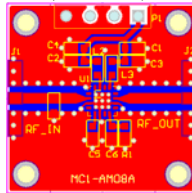
**MC1-AM05A**  
(SOT-343)



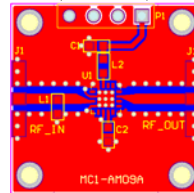
**MC1-AM06A**  
(SOT-143)



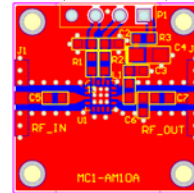
**MC1-AM07A**  
(SOT-23-5)



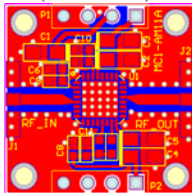
**MC1-AM08A**  
(LP3)



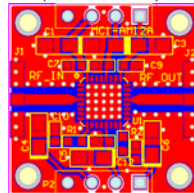
**MC1-AM09A**  
(LP3)



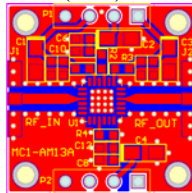
**MC1-AM10A**  
(LP3)



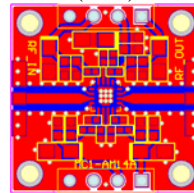
**MC1-AM11A**  
(LP5)



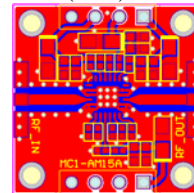
**MC1-AM12A**  
(LP5)



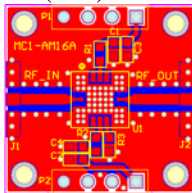
**MC1-AM13A**  
(LC4)



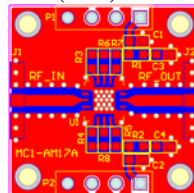
**MC1-AM14A**  
(QAG)



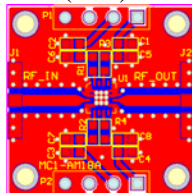
**MC1-AM15A**  
(QDG)



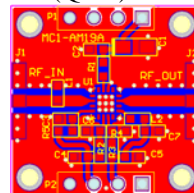
**MC1-AM16A**  
(5x5mm<sup>2</sup>)



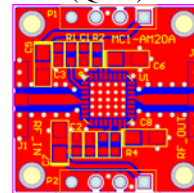
**MC1-AM17A**  
(4x4 QFN)



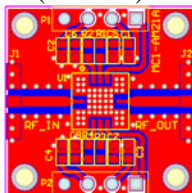
**MC1-AM18A**  
(3x3 QFN)



**MC1-AM19A**  
LP3

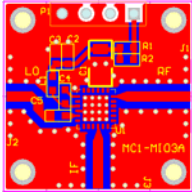


**MC1-AM20A**  
LP5

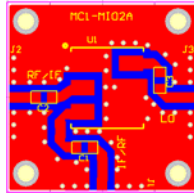


**MC1-AM21A**  
(5x5mm<sup>2</sup>)

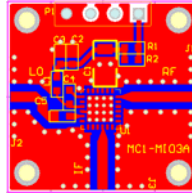
### Mixer PCB Cells



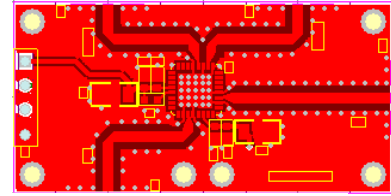
MC1-MI01A  
(CD542\_JVJW)



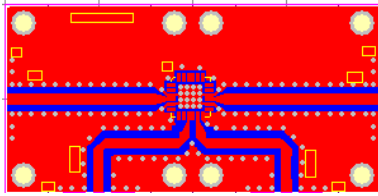
MC1-MI02A  
(CD542\_CDHT)



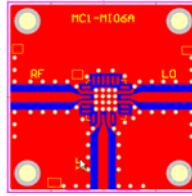
MC1-MI03A  
(LP4)



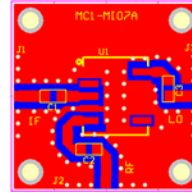
MC1-MI04  
(LC5)



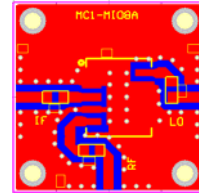
MC1-MI05A  
(LC4)



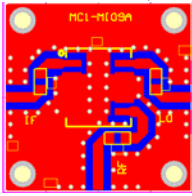
MC1-MI06A  
(LC4)



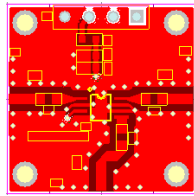
MC1-MI07A  
(SM2-LC)



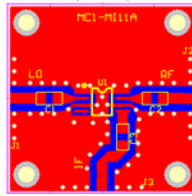
MC1-MI08A  
(SM2-LD)



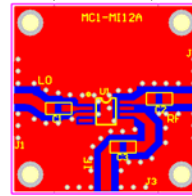
MC1-MI09A  
(SM2-LE)



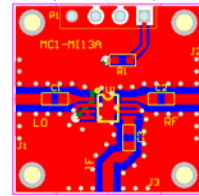
MC1-MI10A  
(MSOP-8)



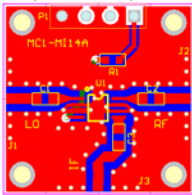
MC1-MI11A  
(MSOP-8)



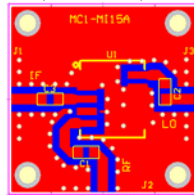
MC1-MI12A  
(MSOP-8)



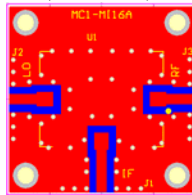
MC1-MI13A  
(MSOP-8G)



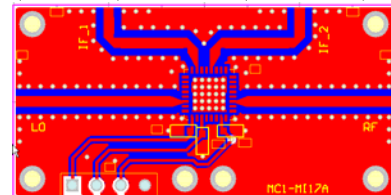
MC1-MI14A  
(MSOP-8)



MC1-MI15A  
(DZ885-LD)

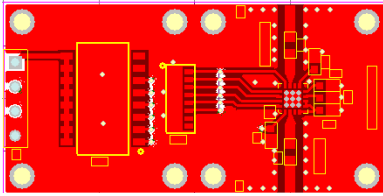


MC1-MI16A  
(TTT167)

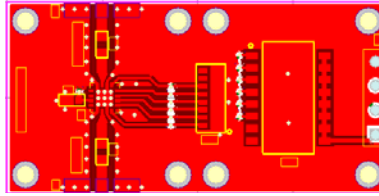


MC1-MI17A  
(LC5)

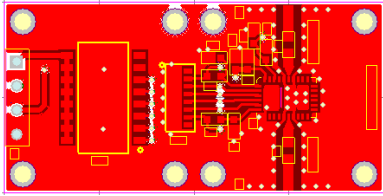
**Attenuator PCB Cells:**



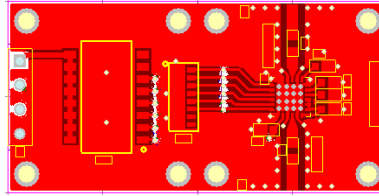
MC1-AT01A  
(LP3)



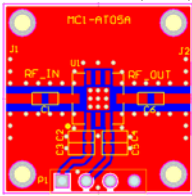
MC1-AT02A  
(LP3)



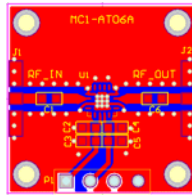
MC1-AT03A  
(LP4)



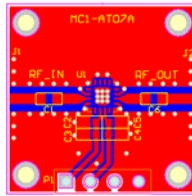
MC1-AT04A  
(PQFN-32)



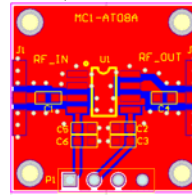
MC1-AT05A  
(SMD-8)



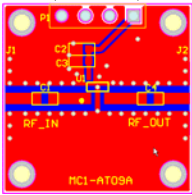
MC1-AT06A  
(QFN3x3)



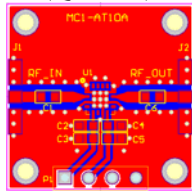
MC1-AT07A  
(QFN3x3)



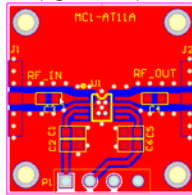
MC1-AT08A  
(SOIC-8)



MC1-AT09A  
(SOT-23-5)



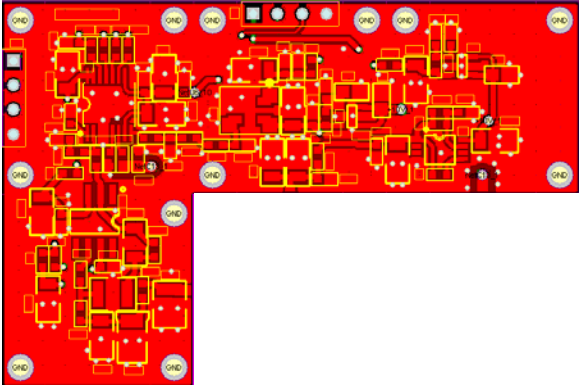
MC1-AT10A  
(LP3)



MC1-AT11A  
(MSOP-8G)

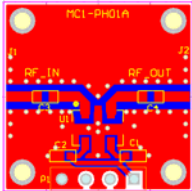


**PLL PCB Cells:**

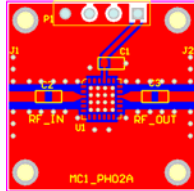


MC1-PL01A  
(TSSOP-16)

**Phase Shift PCB Cells:**

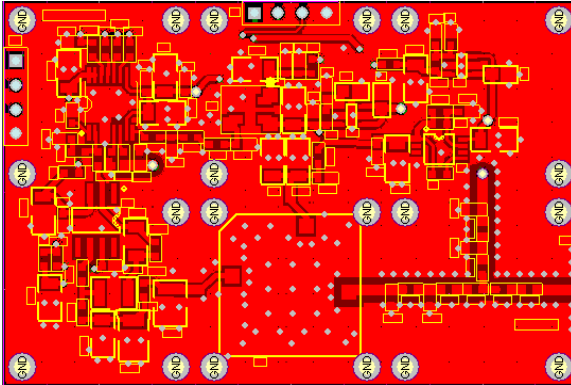


MC1-PH01A  
(LGA-315)

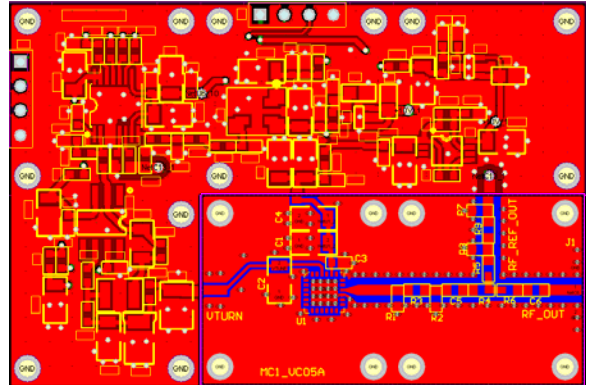


MC1-PH02A  
(LP4)

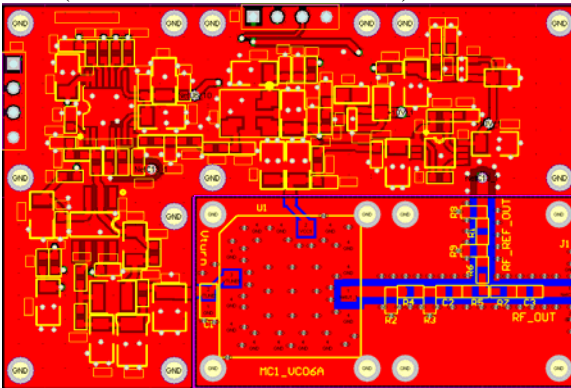
**Synthesizer PCB Cells:**



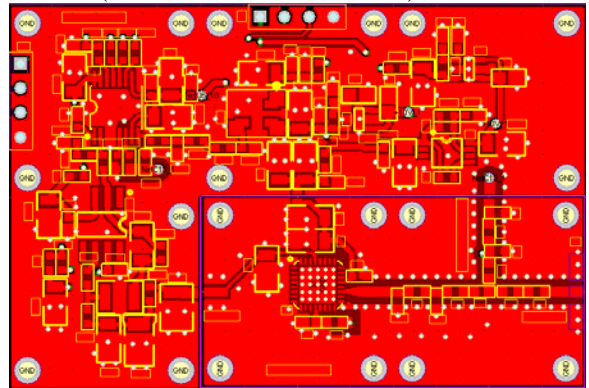
**MC1-SY01A**  
(PLL:TSSOP-16/VCO:5x5mm<sup>2</sup>)



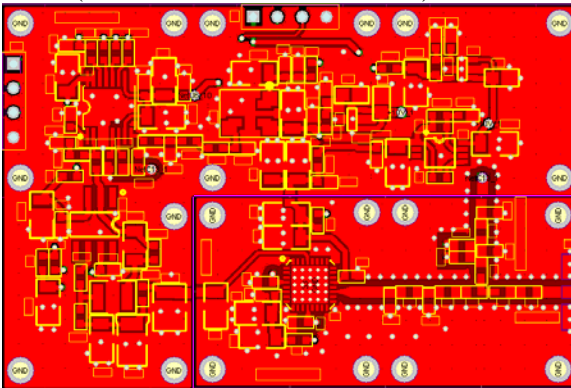
**MC1-SY02A=MC1-PL01A+MC1-VC05A**  
(PLL: TSSOP-16/VCO: LP4)



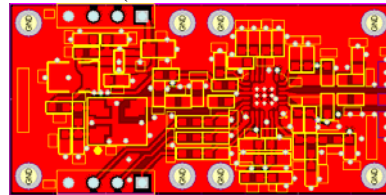
**MC1-SY03A=MC1-PL01A+MC1-VC06A**  
(PLL:TSSOP-16/VCO: 5x5mm<sup>2</sup>)



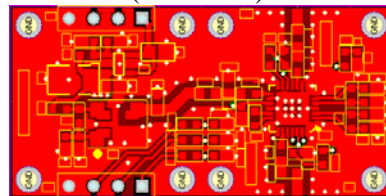
**MC1-SY04A=MC1-PL01A+MC1-VC07A**  
(PLL: TSSOP-16/VCO: LP5)



**MC1-SY05A=MC1-PL01A+MC1-VC08A**  
(PLL:TSSOP-16/VCO: LP5)



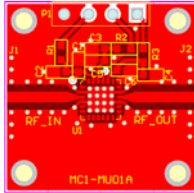
**MC1-SY06A**  
(TSSOP-24)



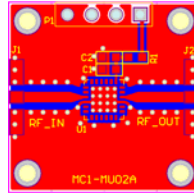
**MC1-SY07A**  
(TSSOP-24)



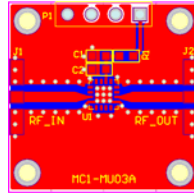
**Multiplier PCB Cells:**



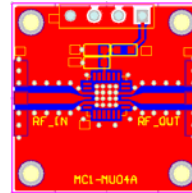
MC1-MU01A  
(LP4)



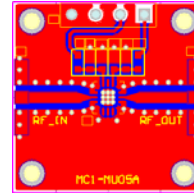
MC1-MU02A  
(LP4)



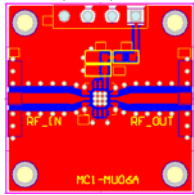
MC1-MU03A  
(LP3)



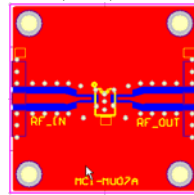
MC1-MU04A  
(LC4B)



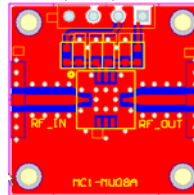
MC1-MU05A  
(LC3B)



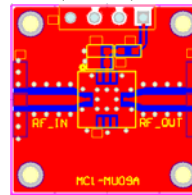
MC1-MU06A  
(LC3B)



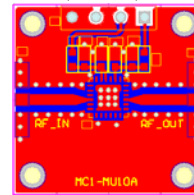
MC1-MU07A  
(MSOP-8)



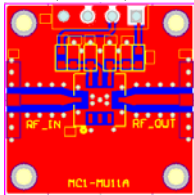
MC1-MU08A  
(5x5mm<sup>2</sup>)



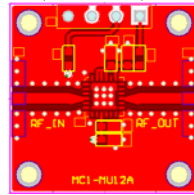
MC1-MU09A  
(5x5mm<sup>2</sup>)



MC1-MU10A  
(4x4 QFN-24)

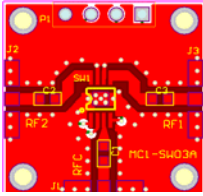


MC1-MU11A  
(5x5mm<sup>2</sup>)

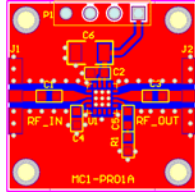


MC1-MU12A  
(4x4 QFN-24)

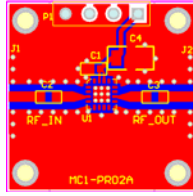
**Prescaler PCB Cells:**



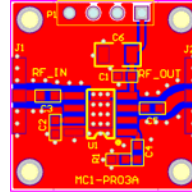
MC1-PR01A  
(LP3)



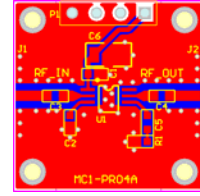
MC1-PR02A  
(LP3)



MC1-PR03A  
(SOIC-8G)

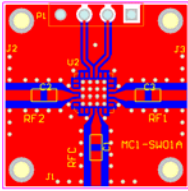


MC1-PR04A  
(MSOP-8)

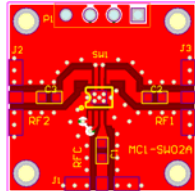


MC1-PR05A  
(SOT-26)

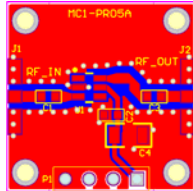
**Switch PCB Cells:**



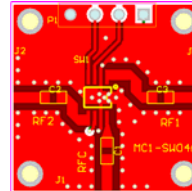
MC1-SW01A  
(LP4)



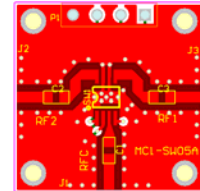
MC1-SW02A  
(MSOP-8G)



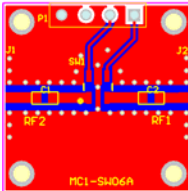
MC1-SW03A  
(MSOP-8G)



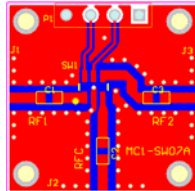
MC1-SW04A  
(MSOP-8G)



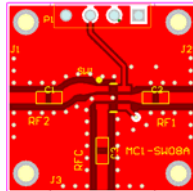
MC1-SW05A  
(MSOP-8G)



MC1-SW06A  
(SOT-26)



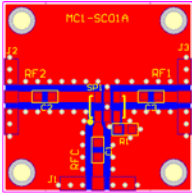
MC1-SW07A  
(SOT-26)



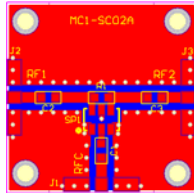
MC1-SW08A  
(SOT-26)



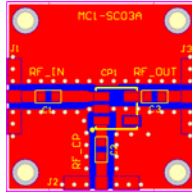
**Splitter and Coupler PCB Cells:**



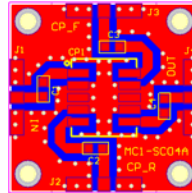
MC1-SC01A  
(FV1206-1)



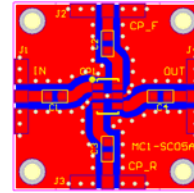
MC1-SC02A  
(FV1206-1)



MC1-SC03A  
(AT790-1)

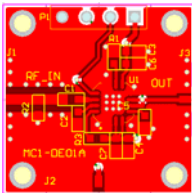


MC1-SC04A  
(DZ944)

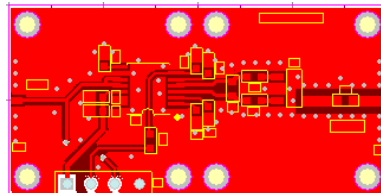


MC1-SC05A  
(FV1206-1)

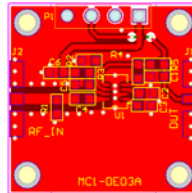
**Detector PCB Cells:**



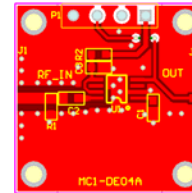
MC1-DE01A  
(LFCSP-16)



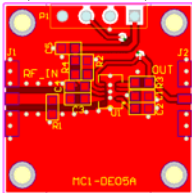
MC1-DE02A  
(TSSOP-16)



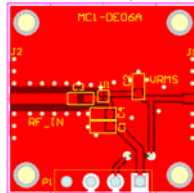
MC1-DE03A  
(LFCSP-8)



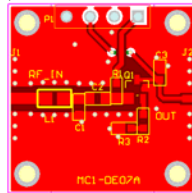
MC1-DE04A  
(MSOP-8)



MC1-DE05A  
(LFCSP-8)

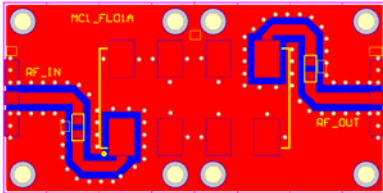


MC1-DE06A  
(WLCSP-4)

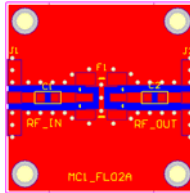


MC1-DE07A  
(SOT-323)

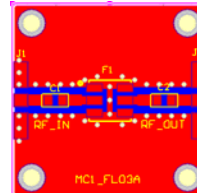
**Filter PCB Cells:**



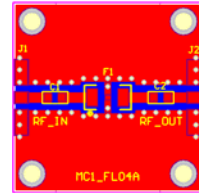
MC1-FL01A  
(YY101, YY161)



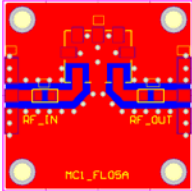
MC1-FL02A  
(P084LHA)



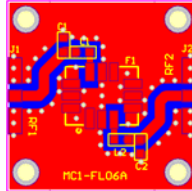
MC1-FL03A  
(FR933)



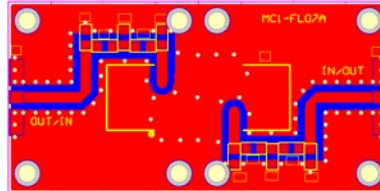
MC1-FL04A  
(FV1206)



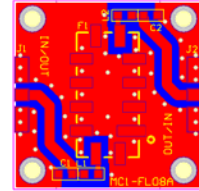
MC1-FL05A  
(MFE)



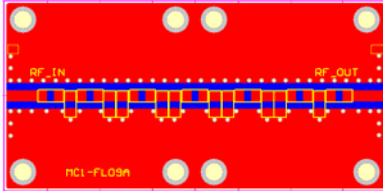
MC1-FL06A  
(SMP-28)



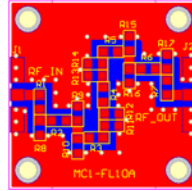
MC1-FL07A  
(SMP-75)



MC1-FL08A  
(SMP-53)

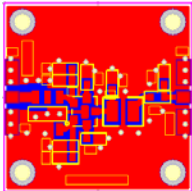


MC1-FL09A  
(RLCs)



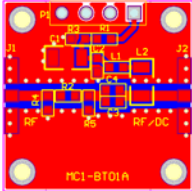
MC1-FL10A  
(RLCs)

**Phase Detector PCB Cells:**

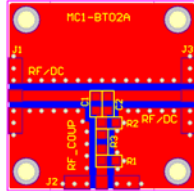


MC1-PD01A  
(SPD-111)

**DC Block and Bias Tee PCB Cells:**

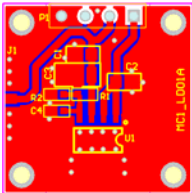


MC1-BT01A  
(RLCs)

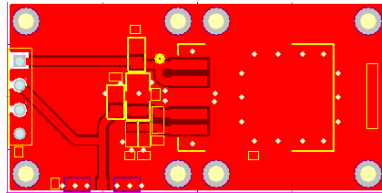


MC1-BT02A  
(RLCs)

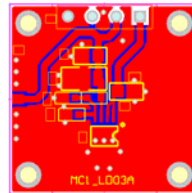
**Regulator PCB Cells:**



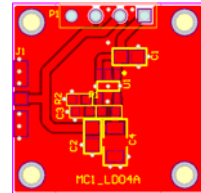
MC1-LD01A  
(SOIC-8)



MC1-LD02A  
(TO-263-5)

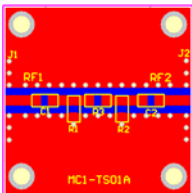


MC1-LD03A  
(MSOP-8)

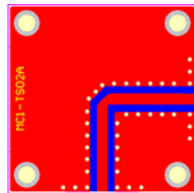


MC1-LD04A  
(SOT-23-5)

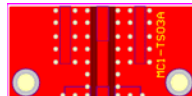
**Transition and Launch PCB Cells:**



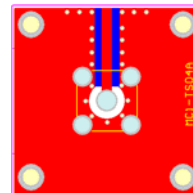
MC1-TS01A  
(RLCs)



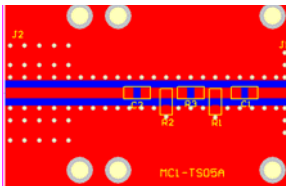
MC1-TS02A  
(N/A)



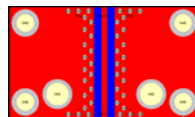
MC1-TS03A  
(N/A)



MC1-TS04A  
(SMA/B/C)

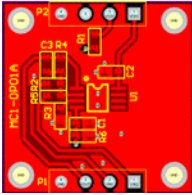


MC1-TS05A  
(RLCs)

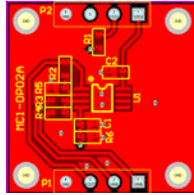


MC1-TS06A  
(Transition with  
SouthWest 2.4/2.9mm  
End Launch Connector )

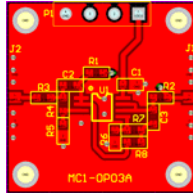
**OP-Amp Application PCB Cells:**



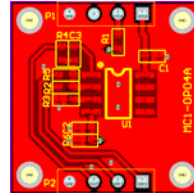
MC1-OP01A  
(MSOP-8)



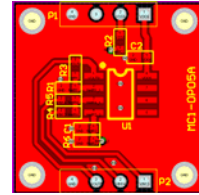
MC1-OP02A  
(MSOP-8)



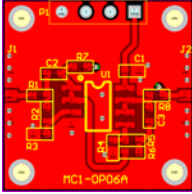
MC1-OP03A  
(MSOP-8)



MC1-OP04A  
(SOIC-8)

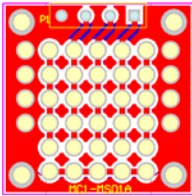


MC1-OP05A  
(SOIC-8)

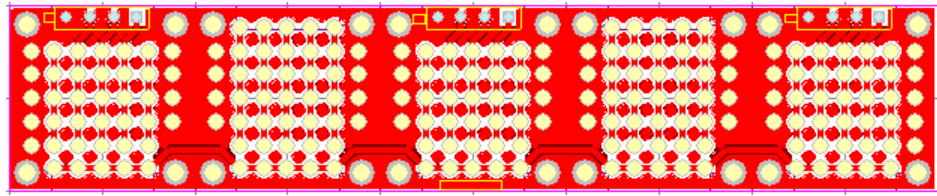


MC1-OP06A  
(SOIC-8)

**Miscellaneous PCB Cells:**



MC1-MS01A



MC1-MS02A

[www.microwavecells.com](http://www.microwavecells.com)