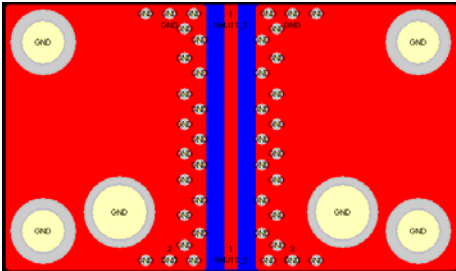


***RoHS Compliant & Pb Free Product***

**MC1-TS06A**

- Category: Transitions (to use with SouthWest Microwave 2.4/2.9mm End Launch connector)
- Device Packages : n/a
- Cell Size: Single (1x0.5)
- PCB Material/Layer Details: RO4350/2 layer with thickness 0.020"

**Schematic:**



**Note. MC1-TS06A has to use with M-BS04A to support SouthWest Microwave 2.40/2.92mm End Launch Connector.**

